

Qbini



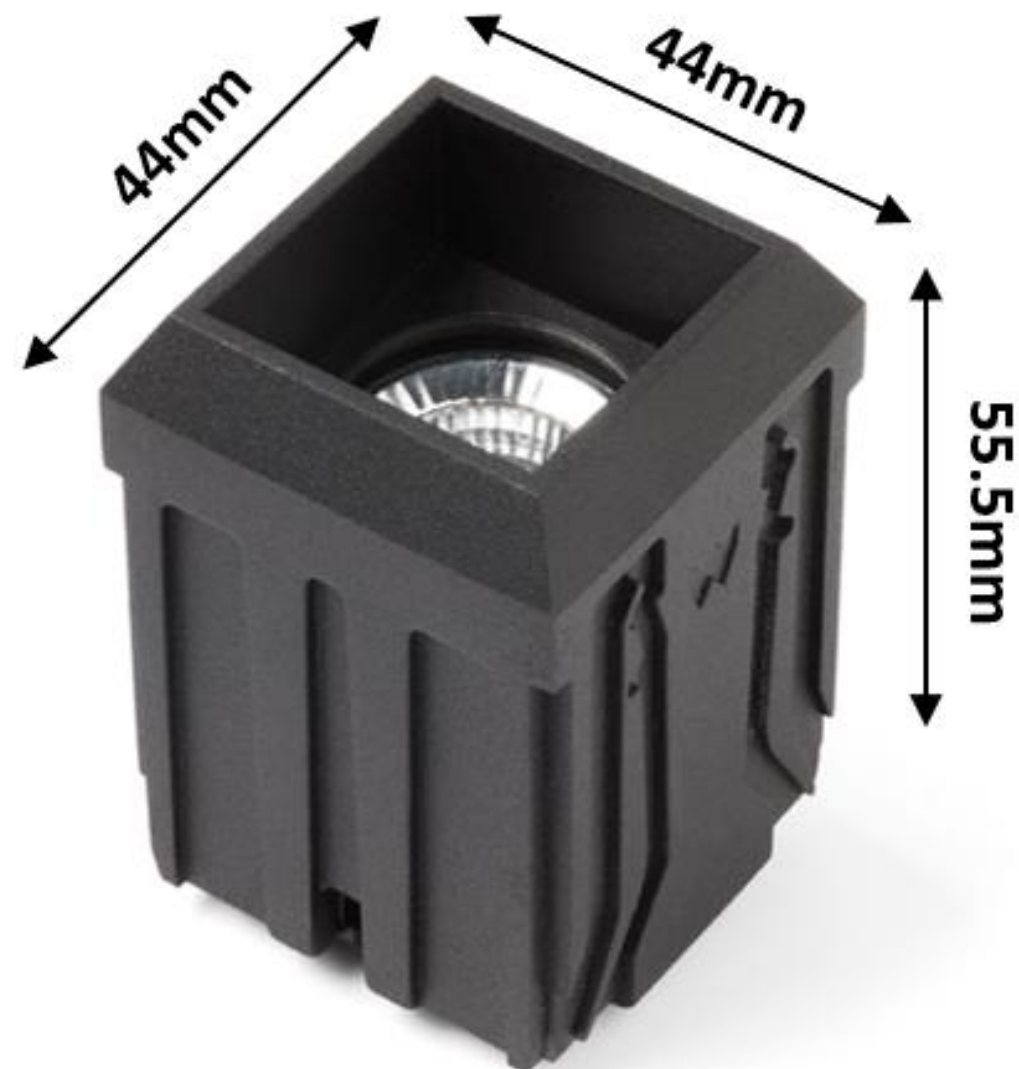
Qbini

Architectural integration with a signature

About Qbini

- Miniature square recessed spot
- Different building blocks, configurable and versatile
- Modern simplicity for intimate space

Designer: Florent Coirier





Market segments

- High-end residential
- Hospitality
- Boutiques

Design



1L QBINI FRAME

2L QBINI FRAME

3L QBINI FRAME

4L QBINI FRAME



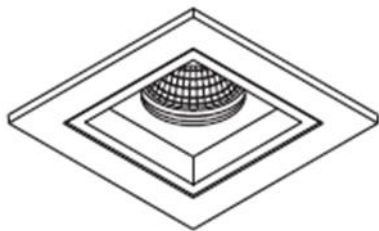
1L QBINI TRIMLESS FRAME

2L QBINI TRIMLESS FRAME

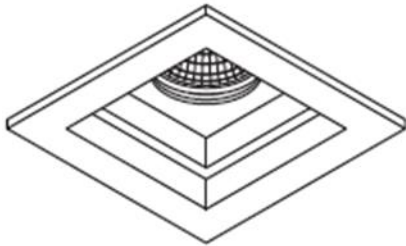
3L QBINI TRIMLESS FRAME

4L QBINI TRIMLESS FRAME

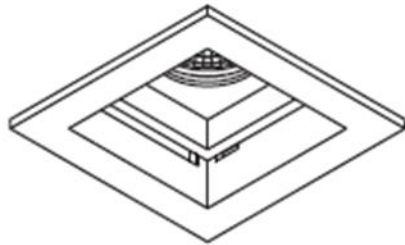
Dual positioning



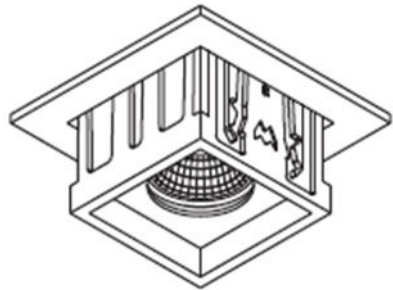
First push
=
first position



Second push
=
second position
=
deep recessed



Third push
=
release position



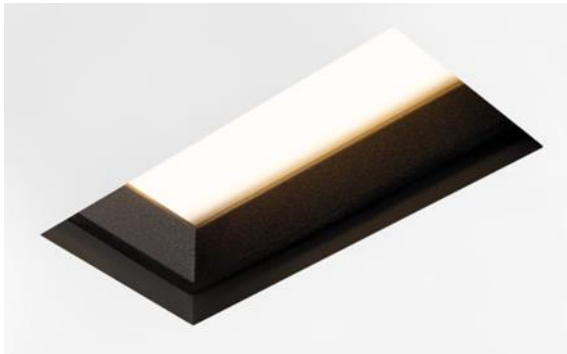
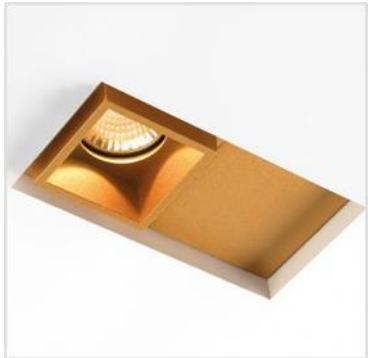
Pull
=
remove

Frames

Trim (9,5mm)



Trimless



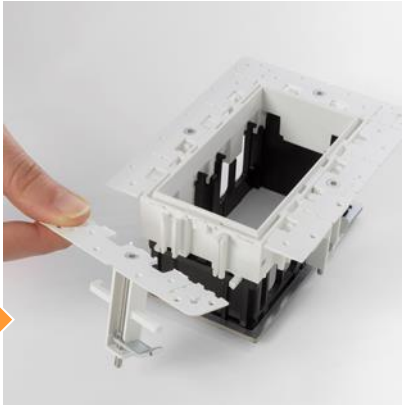
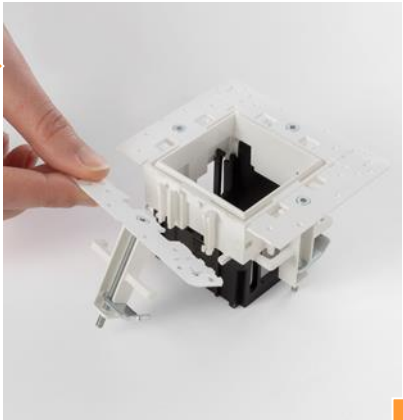
Create your own pattern



Select the frames that you want to connect to eachother.



Cut the marked attachment at the right and left side.

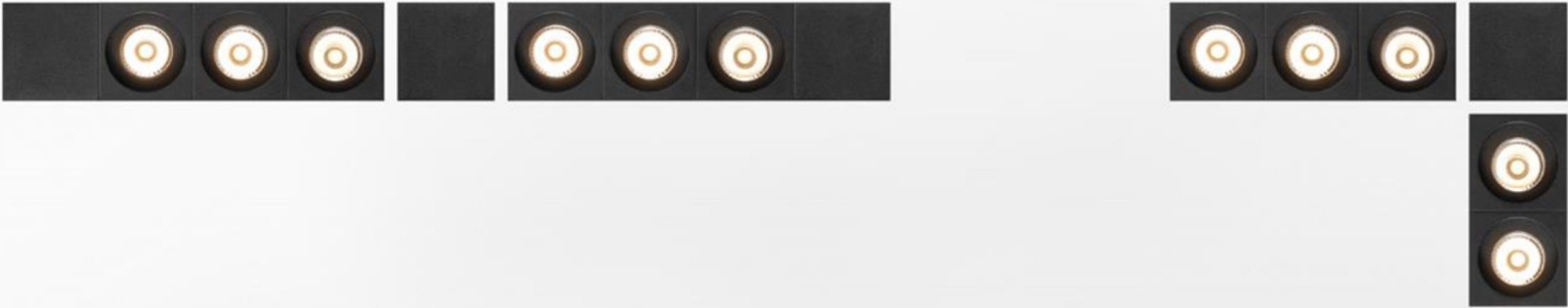


Fold the flange on the provided lines and break it off.



Click the frames into eachother.







square

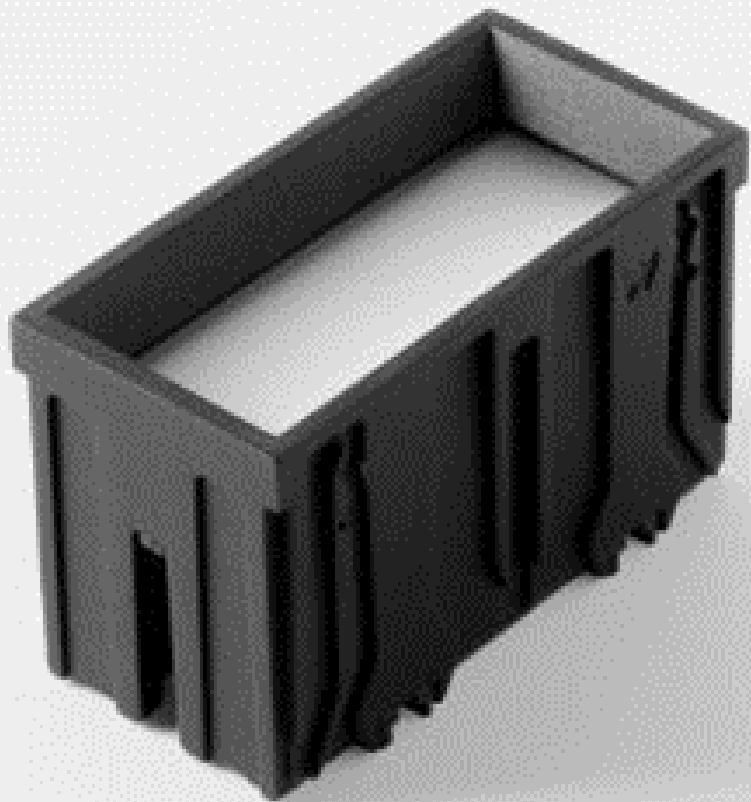
round



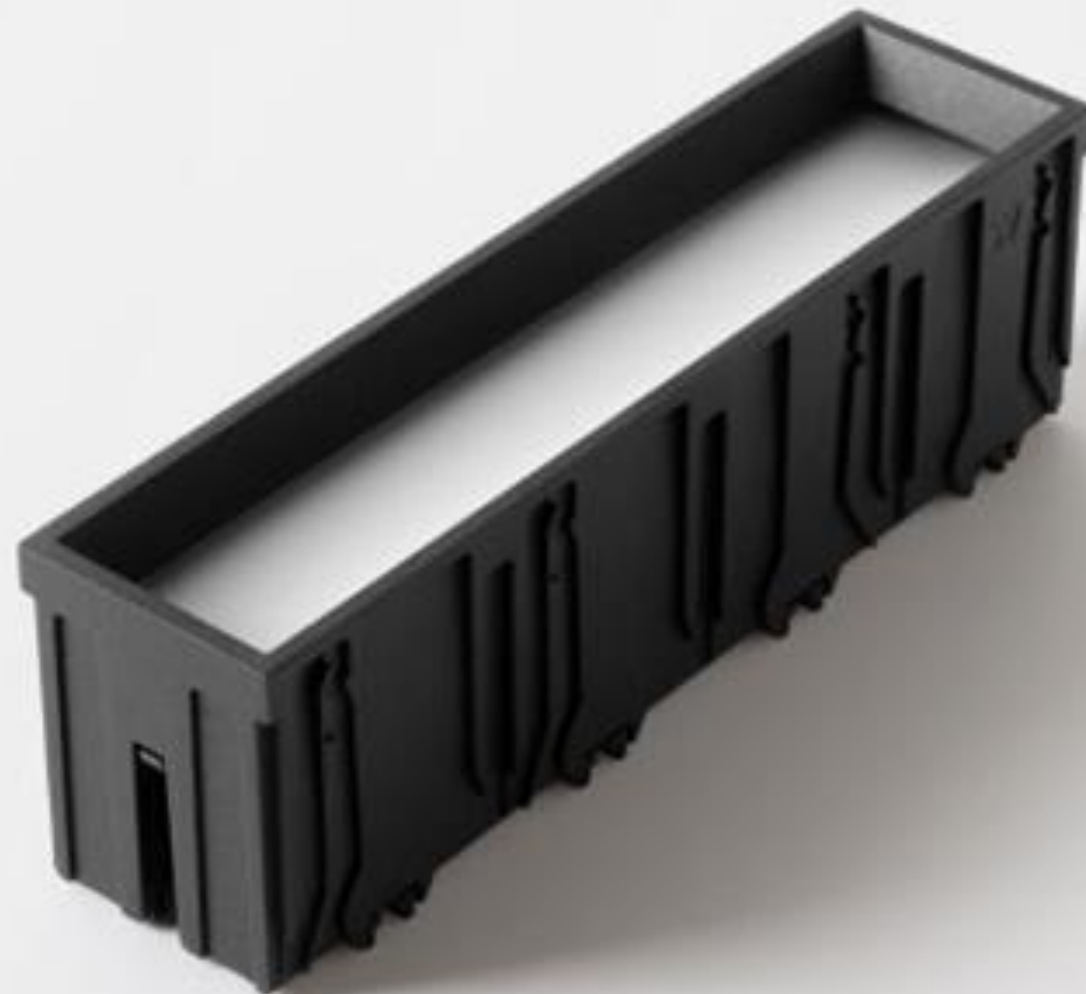
adjustable



asy



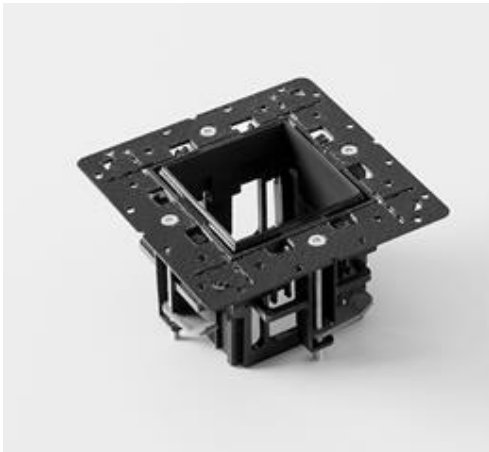
General downlight 2x



General downlight 4x

Colours

- Qbini units
 - Black structure
 - White structure
 - Gold
- Qbini frames
 - Black structure
 - White structure
- Qbini trimless frames
 - Black structure
 - White structure

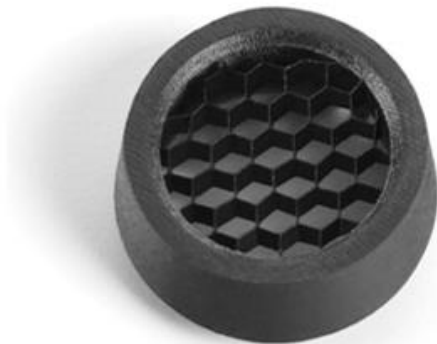


Choose your colour combination





Snoot



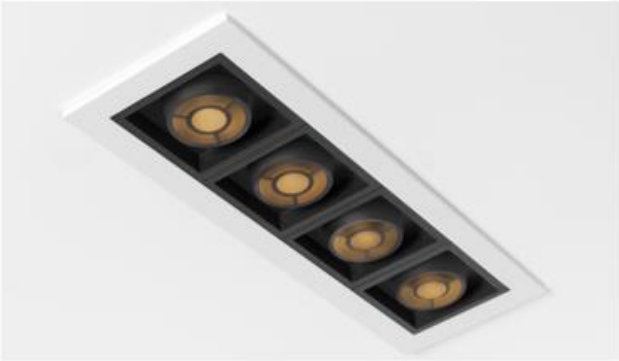
Honeycomb



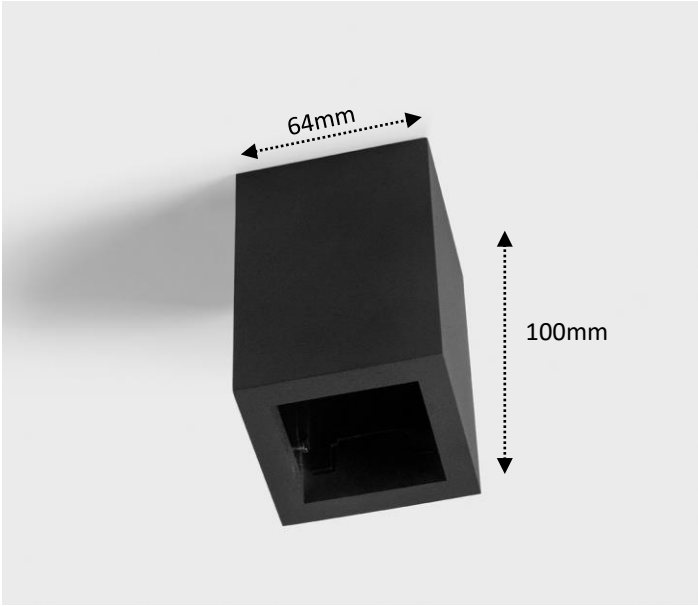
Crossblade



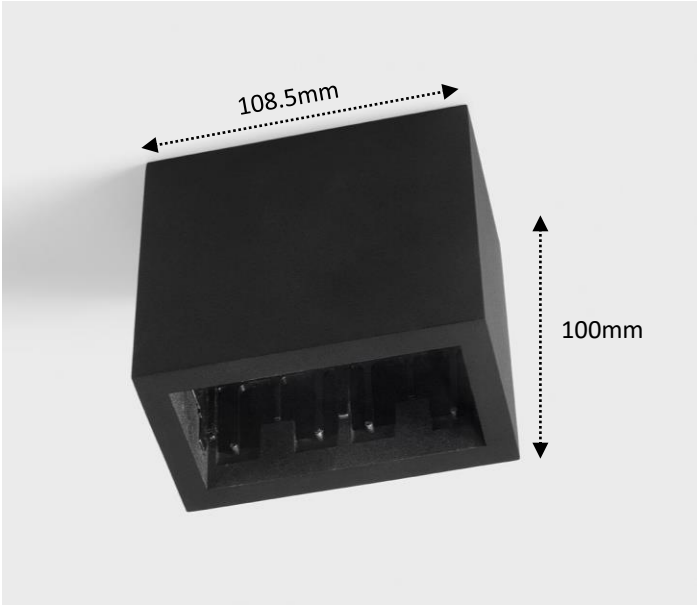
Blind cover



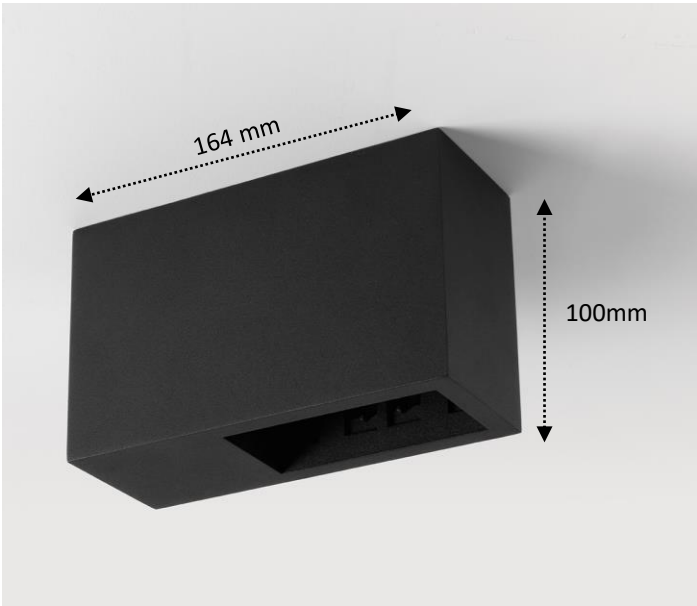
Qbini surface box



Qbini surface box 1x
Gear excluded
Black struc / white struc

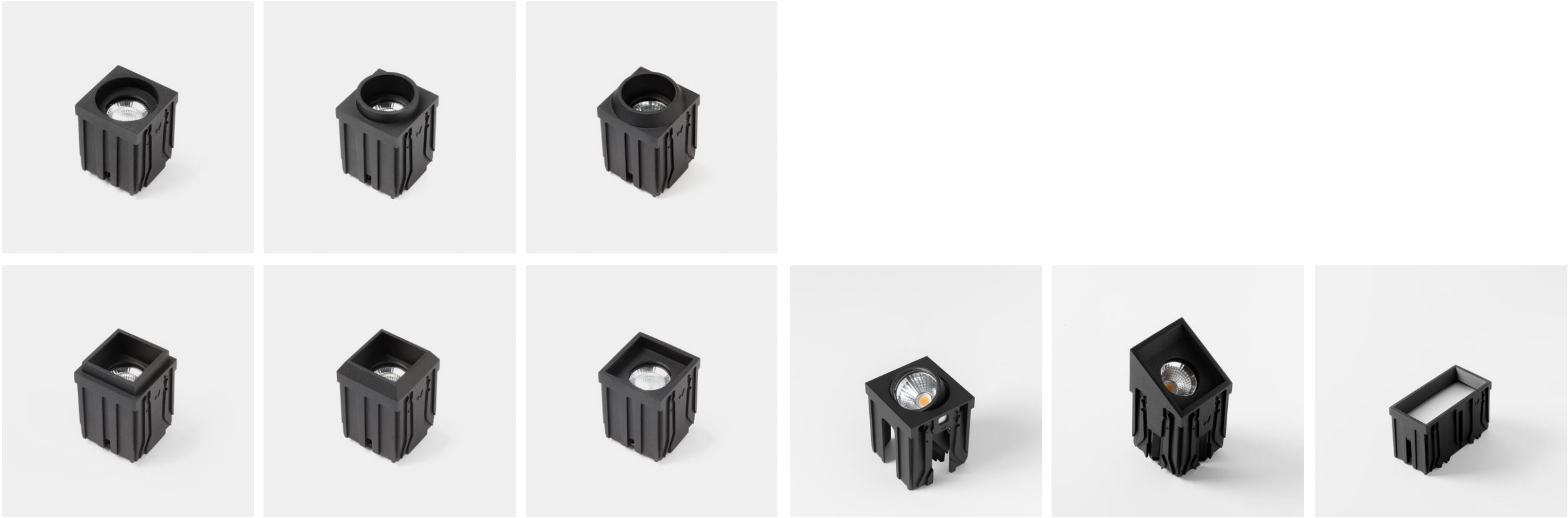


Qbini surface box 2x
Gear excluded
Black struc / white struc



Qbini surface box 2x
Gear included
Black struc / white struc
Tre dim / 1/10V-PD / Dali

Qbini surface box: combine with



QBINI
44X44mm
whstr/blstr/gold

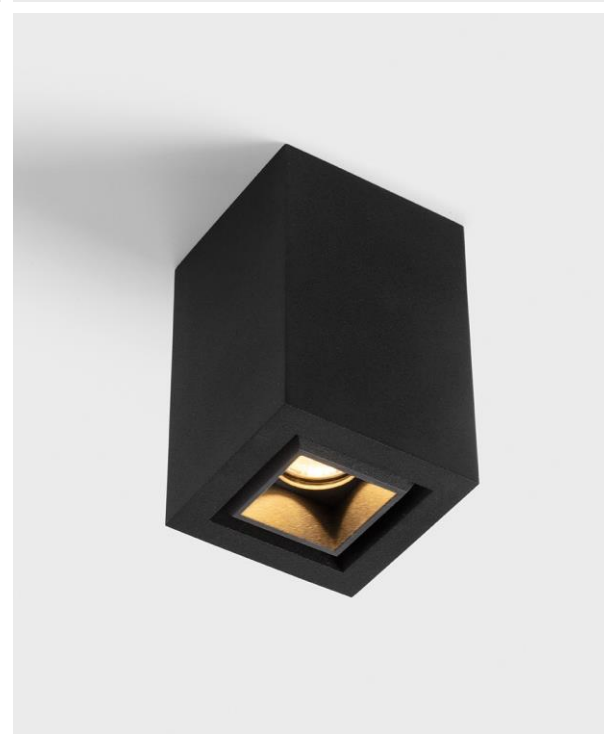
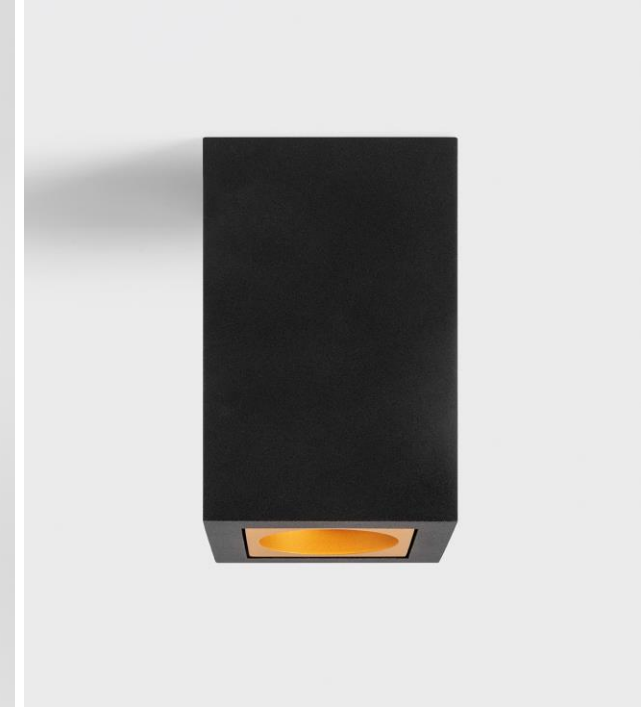
QBINI ADJ.
44X44mm
whstr/blstr/gold

QBINI ASY
44X44mm
whstr/blstr/gold

QBINI GENERAL
44X89mm
whstr/blstr/gold

Qbini surface box

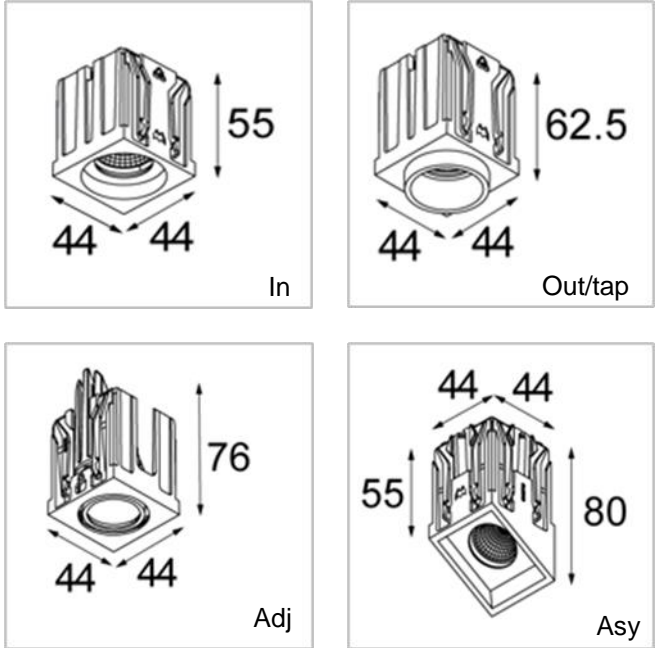




Specifications

Specifications accent lighting

Round in/out/tap GE	Adjustable	Asy
2700K – 3000K – 4000K		2700K – 3000K
CRI90+		
25° - 40°		
IP55	IP20	IP55
370-421 lm ⁽¹⁾	433 lm ⁽¹⁾	428 lm ⁽¹⁾
4,3 W ⁽¹⁾	4,3 W ⁽¹⁾	4,3 W ⁽¹⁾
86-98 lm/W ⁽¹⁾	101 lm/W ⁽¹⁾	100 lm/W ⁽¹⁾
Tre dim 1-10V/push Dali		

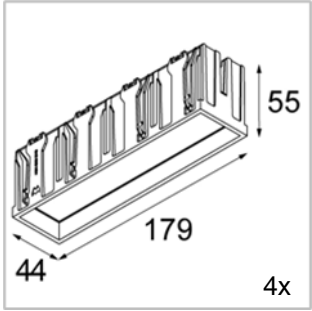
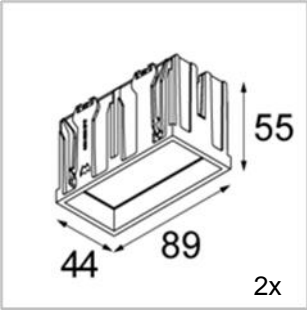


(1) 3000K, white struc, 25°, 500 mA

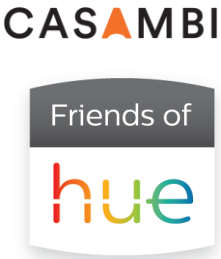
Always check our website for the most complete and up to date specifications!

Specifications general lighting

General 2x		General 4x	
2700K – 3000K			
CRI90+			
IP54			
560 lm ⁽¹⁾		1247 lm ⁽¹⁾	
6 W ⁽¹⁾		12 W ⁽¹⁾	
93 lm/W ⁽¹⁾		104 lm/W ⁽¹⁾	
Tre dim 1-10V/push Dali			



(1) 3000K, white struc, 25°, 500 mA



Always check our website for the most complete and up to date specifications!



DESIGN

MINI SQUARE RECESSED SPOT

RECESSED AND DEEP
RECESSED POSITION

MULTIPLE DESIGNS, FRAMES,
COLOURS AND ACCESSORIES

ULTIMATE FLEXIBILITY AND
GREAT VERSATILITY



APPLICATION

MINIATURIZED SPOTLIGHT

PLEASANT AMBIENT
LIGHTEFFECT

HIGH END RESIDENTIAL
HOSPITALITY
BOUTIQUES



TECHNOLOGY

PATENTED INSTALLATION
SYSTEM

DUAL POSITIONING

HIGH QUALITY OF LIGHT

CONNECTED











