

# RESIDENTIAL LIGHTING

*By Modular Lighting Instruments*

# RESIDENTIAL LIGHTING|

- The basics
- Creating a lighting design concept
- Keep an eye on the budget
- Case study
- Tips & tricks
- Inspiration



# RESIDENTIAL LIGHTING|

## The basics



## RESIDENTIAL | the basics

*“It’s all about creating the right mood*

*And reinforce the interior design”*

There are different types of lighting,

when combined correctly in layers, will create the optimum inspirational lighting solution.

Each layer of light has its individual effect, but can be combined to create a magical overall design.



## Task lighting

Direct, focused light to help with a close range of work,  
like food prep, reading, or hobbies.

Some projects and tasks require extra light  
to see details.

Use task lighting for workspaces  
like kitchen counters, desks,  
or anywhere that you need more light.



## Accent lighting

Create focal points or highlight the beautiful features of the interior

Brighter than ambient light  
but more focused,  
accent lighting is the finishing touch to make a  
room more interesting.

Use it to highlight  
artwork, architectural details,  
or anything  
that you want to draw attention to.





## Ambient Lighting

Ambient light provides basic mood lighting.

Be modest in using  
general lighting  
in a residential project..

By grouping your fixtures you can create contrasts  
for a relaxed ambiance,



## Orientation Lighting

Guides you through the night

Small lighting fixtures  
Indicate the direction  
On the staircase, in the night hall,...



# RESIDENTIAL LIGHTING|

## Creating a lighting design concept



## RESIDENTIAL | creating a lighting concept

*“The design of the fixtures you choose,*

*And the way we integrate them into the space*

*Must bring the interior and architecture to a higher level.*

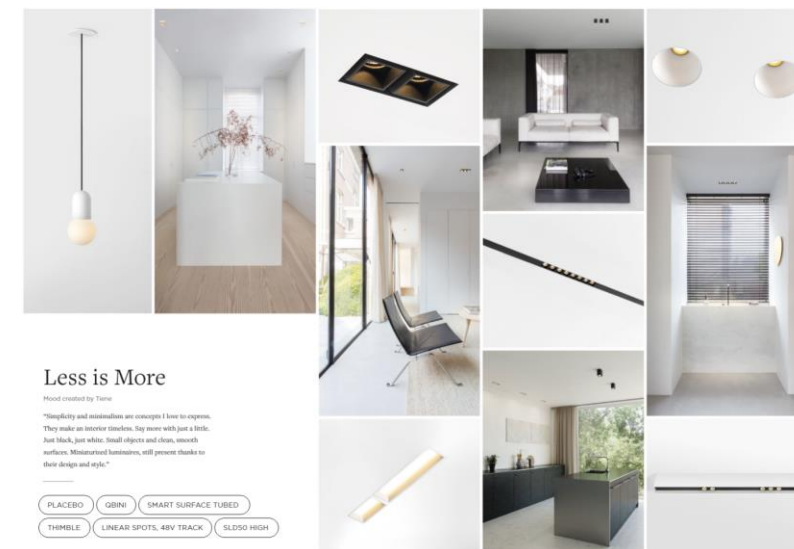
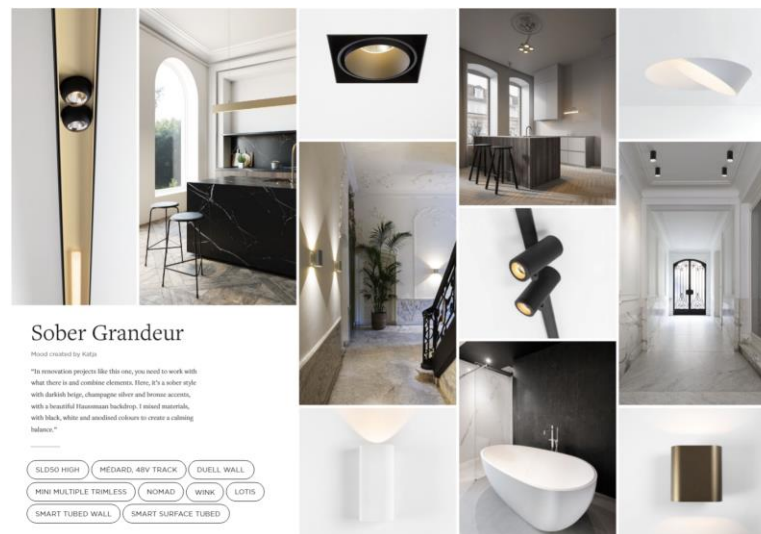
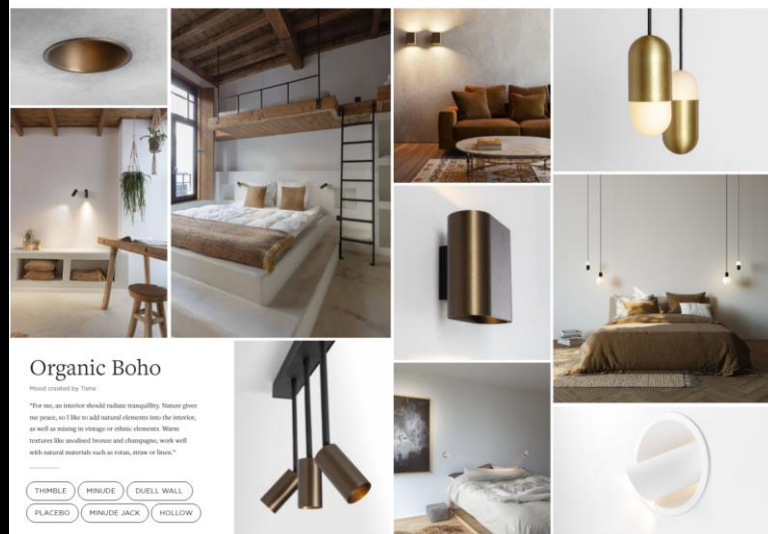
“ I don't  
think  
outside  
of the box;  
I think  
of what  
I can  
do with  
the box. ”



# 01

## Choose your luminaires wisely

First of all we start by looking at the overall concept of the architectural space,  
Knowledge of the materials, colors and global style gets you closer to the architect's concept so you can interact with it





02

*Analyse the architectural layout of your project*

Mark **important viewing axes** with light



**Highlight** special features



Connect **the different spaces** using light



**Integrate the exterior** into the interior



03

*Find the rhythm of the architectural space*

Use **linear lighting** to strenghten the architectural space



Think **3-dimensional**



Create some tension by **grouping fixtures**



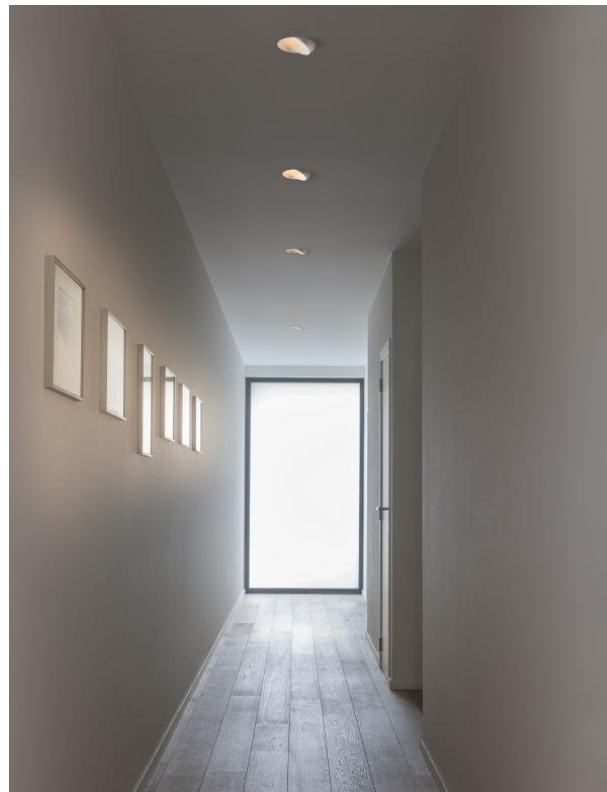
Play with **unexpected positioning**





04

*Create an interesting tension between light and shadow*



# RESIDENTIAL LIGHTING|

## Keep an eye on the budget



# RESIDENTIAL | keep an eye on the budget



2023 AVERAGE PRICES\* PER M²

SEGMENT	LOW	MID	HIGH
RESIDENTIAL	64 €/m²	95 €/m²	133 €/m²
HOSPITALITY	53 €/m²	106 €/m²	159 €/m²
OFFICE	80 €/m²	106 €/m²	159 €/m²
HEALTHCARE	64 €/m²	106 €/m²	159 €/m²
SHOP	74 €/m²	127 €/m²	212 €/m²

\* based on gross prices



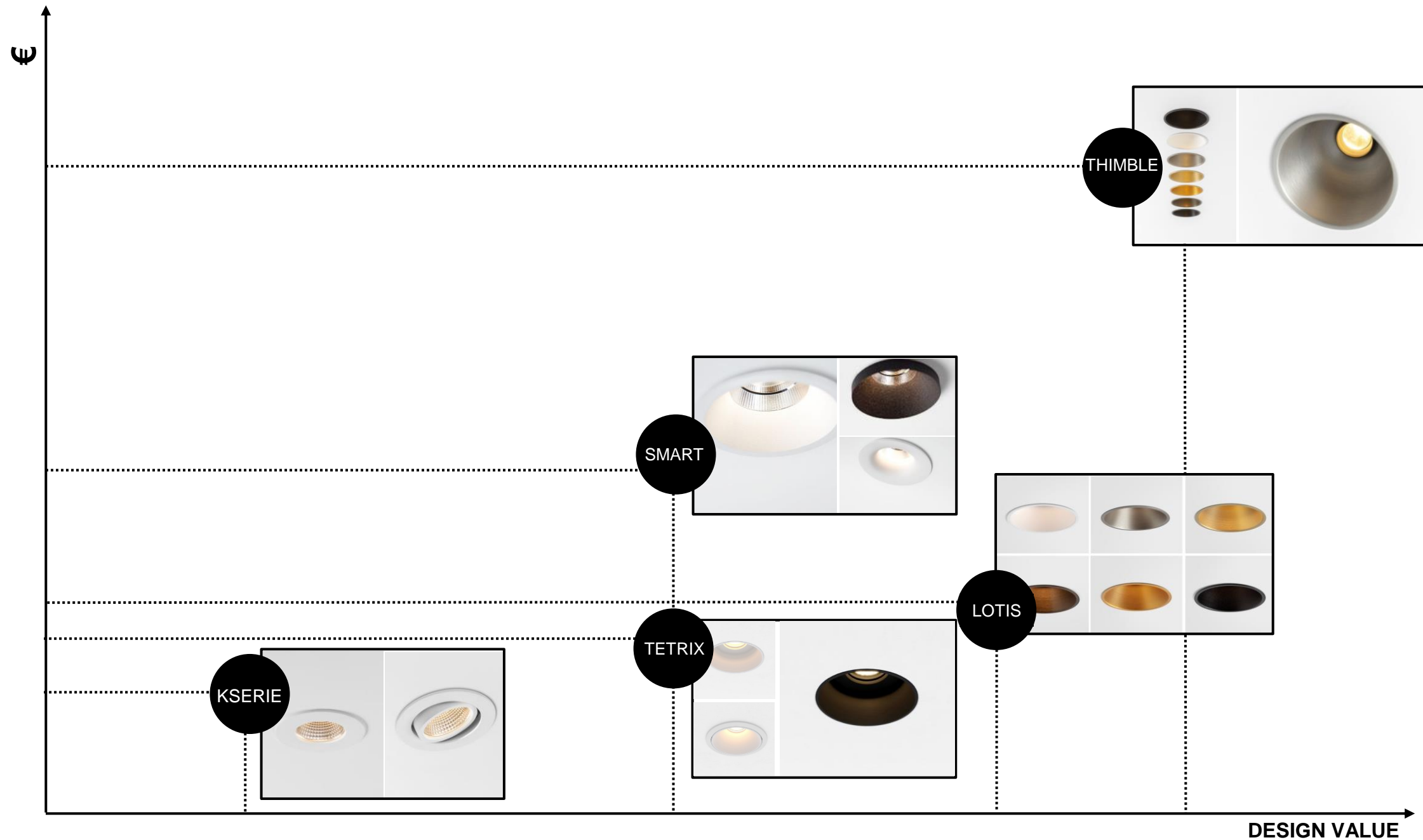


You like a certain PISTA configuration that connects the kitchen area with the living room?  
Or you are in love with a bunch of PLACEBO fixtures suspended above the staircase?

*Choose your priorities*

*But don't limit your creativity*

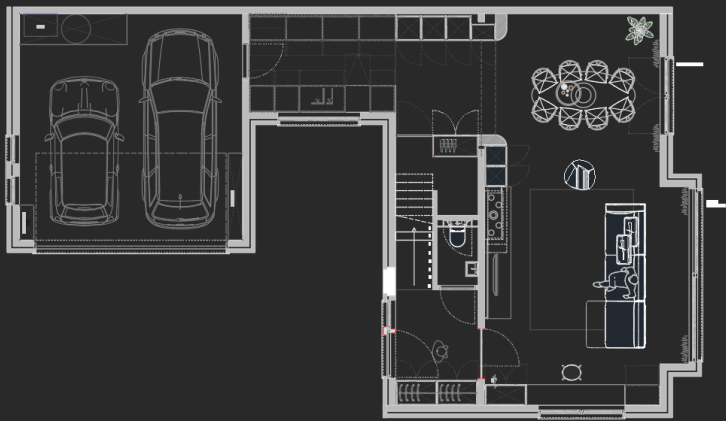
Choose the spotlight which fits your budget  
for your basic light layers,  
And get the maximum out of your favorite eyecatchers.



# RESIDENTIAL LIGHTING| Case Study







#### SITUATION:

Renovation of a house in Knokke, Belgium  
Modern minimalistic, rustic interior design

#### GROUND FLOOR:

Concrete ceiling, exchanging existing lighting points

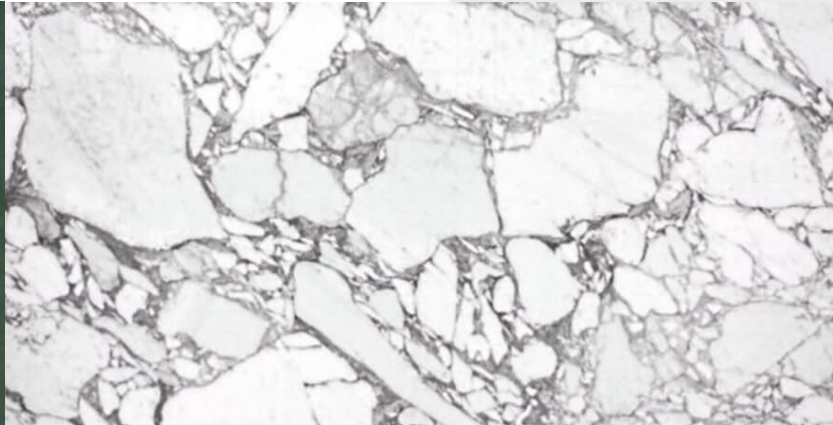
#### FIRST FLOOR:

New false ceiling, 15cm recessed depth

New lighting layout possible

#### REQUEST:

Serene, minimalistic setup with a warm, atmosphere  
Soft color palette in harmony with the materials  
Used in the interior



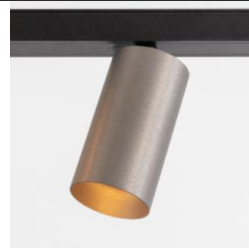
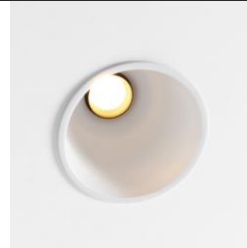
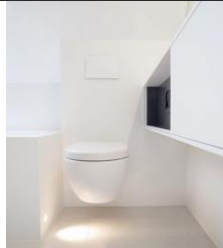


#### GROUND FLOOR:

We had to take existing light points and technical limitations into account.

Surface mounted fixtures on the concrete ceiling  
Recessed mounted spotlights which fit in the existing cut-out-holes.

White finishes, in combination with anodized silver bronze accents  
2700K



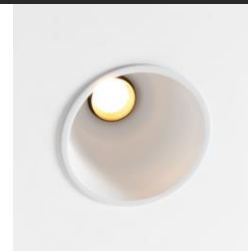
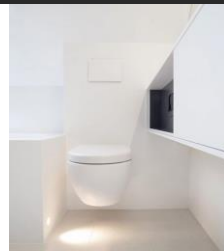


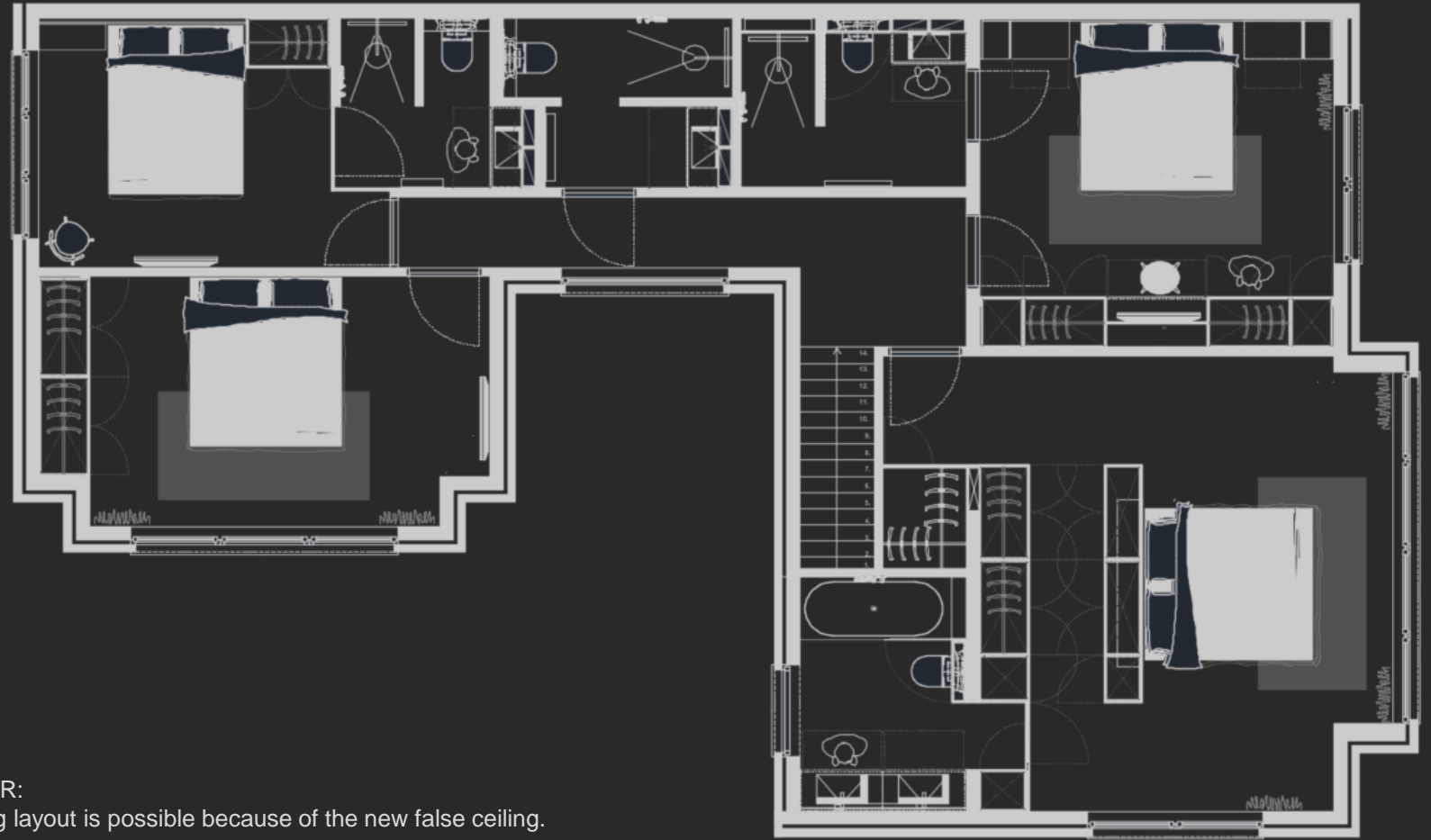
GROUND FLOOR:

Outside smart kup 82 fits in the cut-out-hole of the existing light points.  
Marbul ceiling fits the centralized lighting point in the entrance hall.

In the living room Pista track 48V provides an ideal solution for placing light in the right place  
if the power supply cannot be moved just anywhere.

In the kitchen cupboard 3x thimbe 74 were integrated to highlight the working area

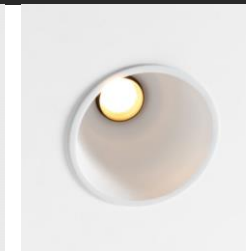
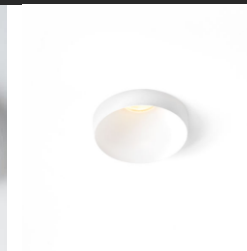
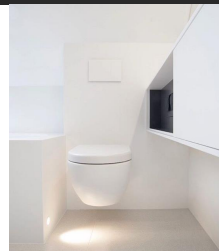




#### FIRST FLOOR:

A new lighting layout is possible because of the new false ceiling.

Combination of recessed/semi-recessed downlighters  
White finishes, in combination with anodized silver bronze accents  
2700K





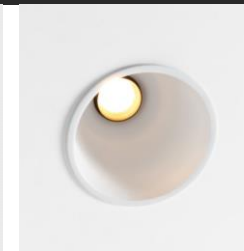
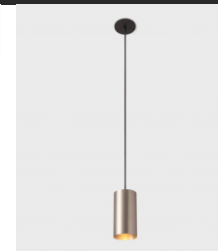
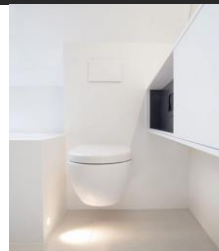


## task lighting



### FIRST FLOOR:

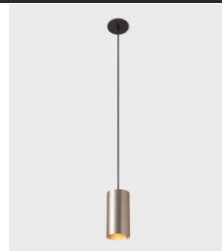
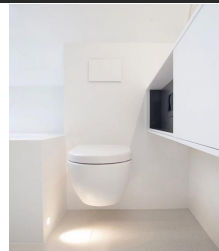
Thimble 74 on a grid in the walkthrough dressing room  
 Minude 45 suspended above the night table  
 Smart Kup 48+ grouped above the bathroom mirror  
 Integrated mirror lighting in the master bathroom.





accent lighting

task lighting



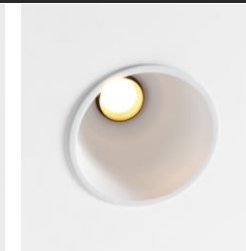
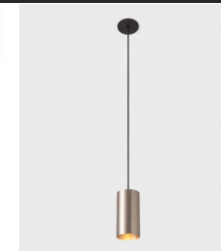
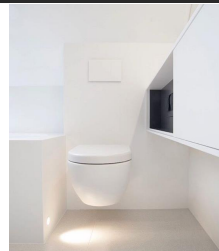




ambient lighting

accent lighting

task lighting



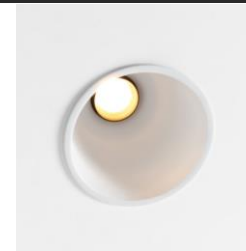
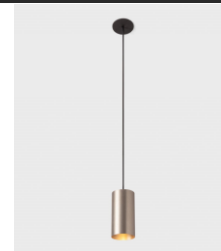
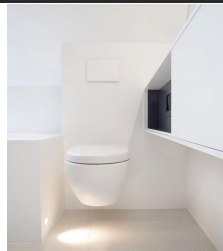


orientation lighting

ambient lighting

accent lighting

task lighting



Optimize your lighting design by assigning **different circuits**.

Finalize your lighting plan by adding

- **decorative lighting**
- **technical lighting** in the garage & storages
- **exterior lighting**

Our lighting partners can help you finalize your lighting plan,  
And they will guide you further in the project process.

Check our partner network on [www.supermodular.com](http://www.supermodular.com)







# RESIDENTIAL LIGHTING| Tips & Tricks





ZONE 3 – anywhere outside zones 0,1 & 2  
no IP rating required



# *Guide to IP ratings & bathroom zones*

An IP rating is a number that is given to specify the level of ingress protection  
 The IP number is composed of two digits,  
 the first referring to the level of protection against solid objects such as dust and  
 the second against liquids such as water.

The higher the number the better the protection level will be.

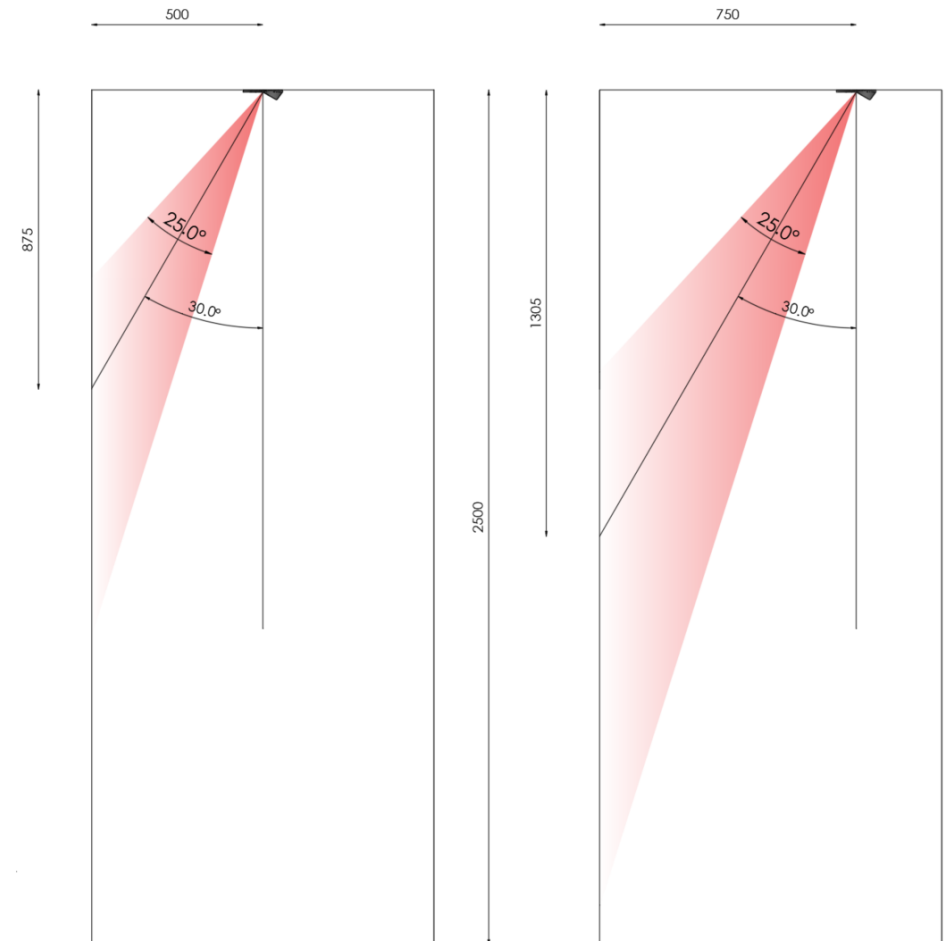
IP	2	0	- touch proof
			Protection against solids up to 12mm square No resistance to water
IP	4	4	- limited water resistance
			Protection against solids up to 1mm square Protection against water sprayed from all directions; resistant to splashes of water
IP	5	5	- limited water resistance
			Protection against dust that may harm the equipment Protection against low-pressure water jets from all directions
IP	6	7	- Submersible, - Can be temporally submersed in water for short periods of time. - From depts of 150mm to 1 meter



## Using directional spotlights for highlights

The distance from the wall depends on several factors:

- What is the **inclination angle** of the fixture?
- What is the **room height**?
- Where do you want **your focus point** on the wall?



# RESIDENTIAL LIGHTING| inspiration





*Private Residence Wisselkouter by CAAAP, Merelbeke  
(BE)*

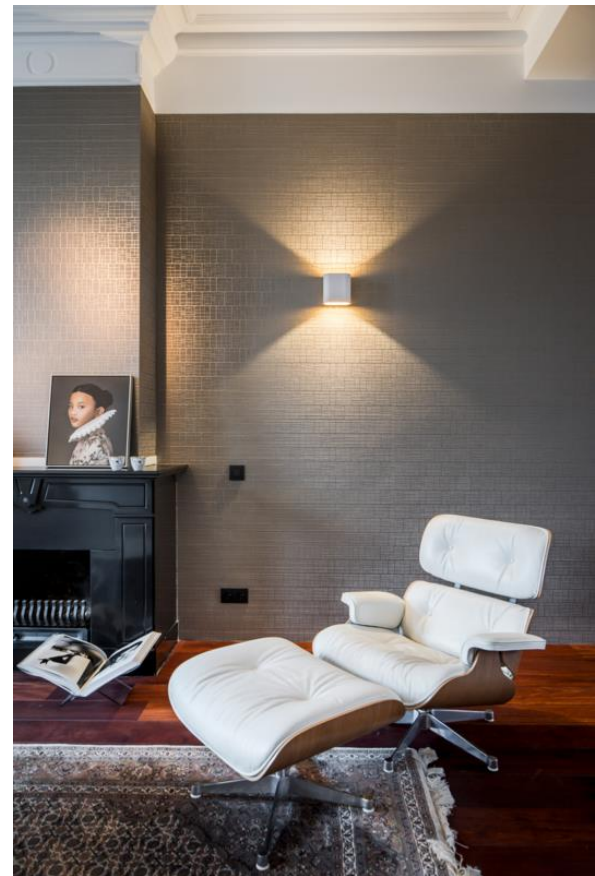
Architect Abscis Architecten  
Stad , België  
Fotograaf Yannick Milpas



## *Private Residence, Knokke (BE)*

**Architect** De Maatwerker  
**Stad** Knokke, België  
**Fotograaf** Gwendoline Dumolijn

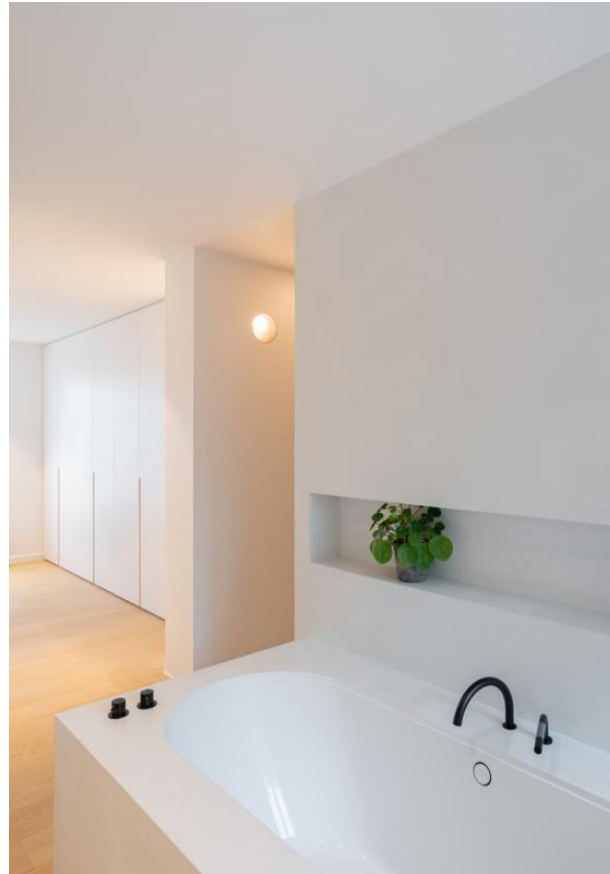




## *Private Residence, The Hague (NL)*

**Architect** Alfred Toet  
**Stad** Den Haag, Nederland  
**Fotograaf** Peter Baas





## *Private Residence, Oud-Heverlee (BE)*

**Architect** BNE Architecten  
**Stad** Oud-Heverlee, België  
**Fotograaf** Jim Van Loo



## *Private Residence, Calvi (FR)*

**Architect** Superstane

**Stad** Calvi, Frankrijk

**Fotograaf** Stéphane Waroczyk

