

TRENDS IN OFFICE LIGHTING

By Modular Lighting Instruments

Trends in Office design

- Sustainability
- Well-Being
- Hybrid Working
- The concept office

01

SUSTAINABILITY

A sustainable office design is not limited to only saving energy,
It also requires cut down on the wastage of non-renewable resources
and
including nature into your design

Energy-saving

BREEAM – Building Research Establishment Environmental Assessment Method
LEED – Leadership in Energy and Environmental Design

The circular office

Natural resources
Eco-design
Energy labeling
Serviceability
replaceability



Energy-saving



Natural resources



Integrate nature into your design



02

WELL-BEING

Promoting employee well-being is a key factor.

Well-being in this context is a general term that incorporates several subjective factors of satisfaction in the workplace.

Factors such as visual and physical comfort, physical strain while working, stress level, general mood, relations with coworkers, general productivity, to name a few.



Integrate movement & play



Bring in nature

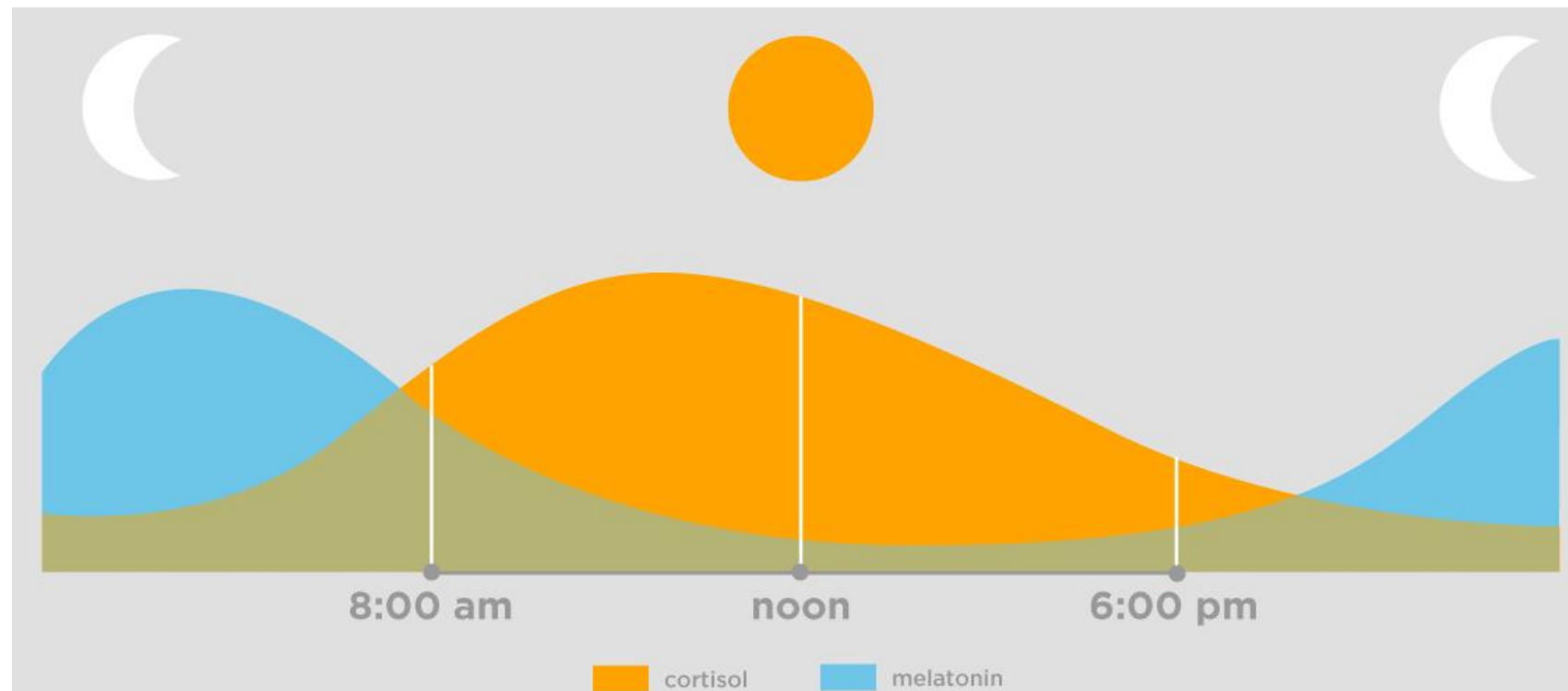
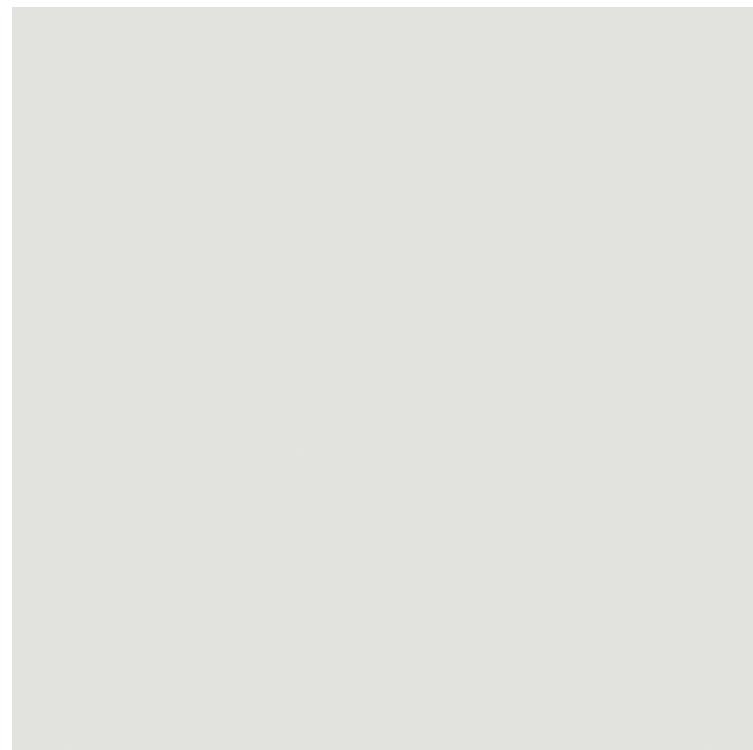


human-centric lighting



Human Centric Lighting

Or how lighting affects our circadian rhythm



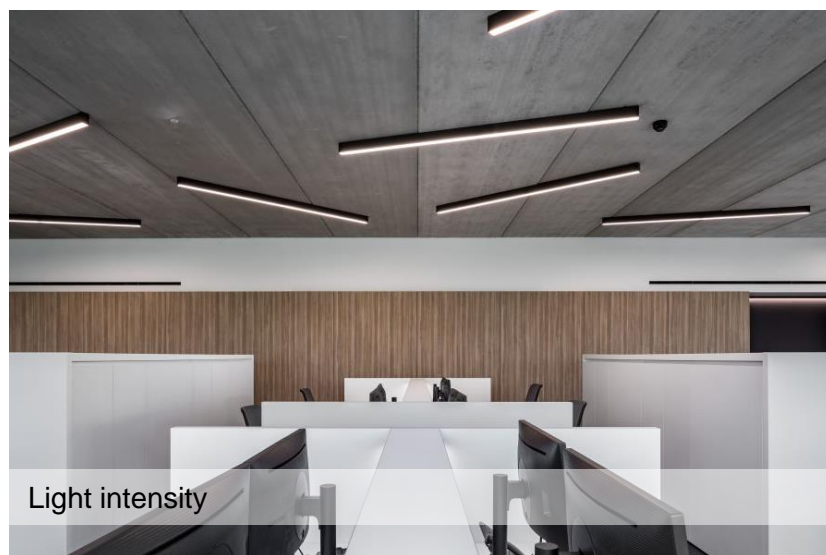
How can a good lighting concept influence
our circadian rhythm?



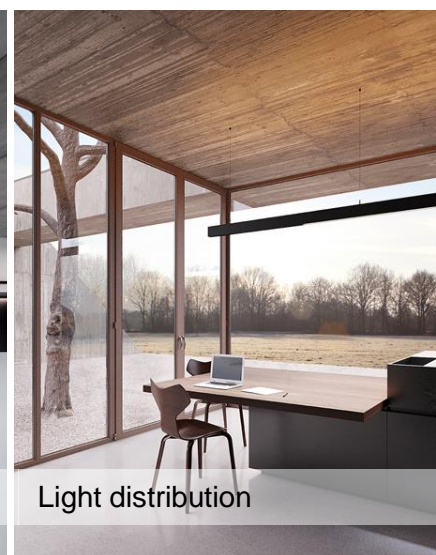
Control the lights



Color spectrum



Light intensity



Light distribution



Lighting design

Activate light routines

The right amount of light
with the right spectral content
at the right time

TUNEABLE WHITE

Available for:
SLD50
SLD50 HIGH

6500K ▶



WORKSPACE

Cool light level
Raise energy level

5500K ▶



COFFEE BREAK

Cool to warm light
Decrease light levels
Have a break and refresh

3000K ▶



RELAXING SPACE

Warm light level
Decrease light level
Melatonin production

2700K ▶

03

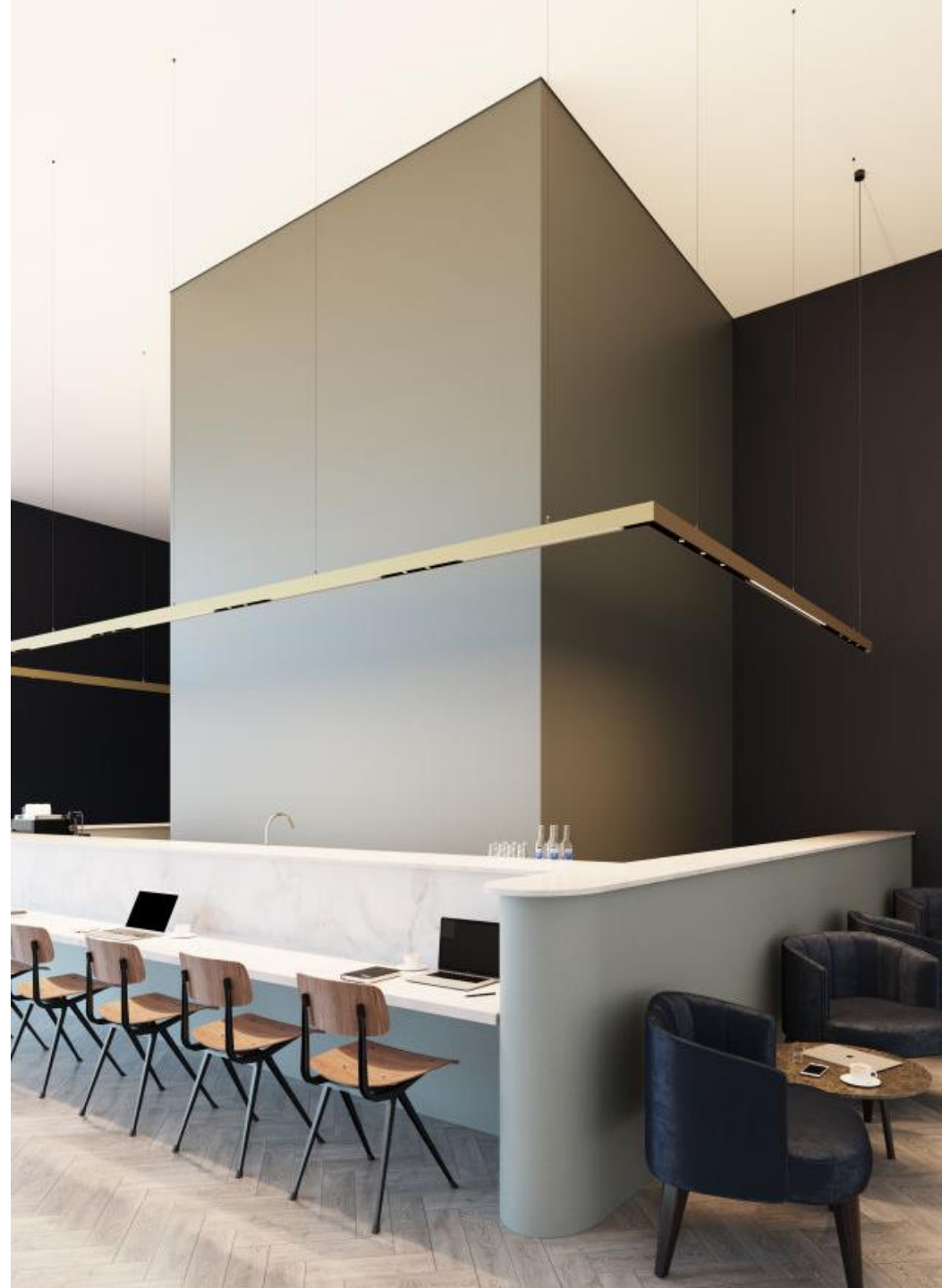
HYBRID WORKING

Our work patterns are changing,

And offers more freedom to decide HOW, WHEN and WHERE we work.

The home-office is combined with a day at the office,

Typical offices will be more of a meeting ground, a community-centered space for group collaboration and for people to get together.



The home-office



meet and greet at the office



Choose a worksetting to suit your activity

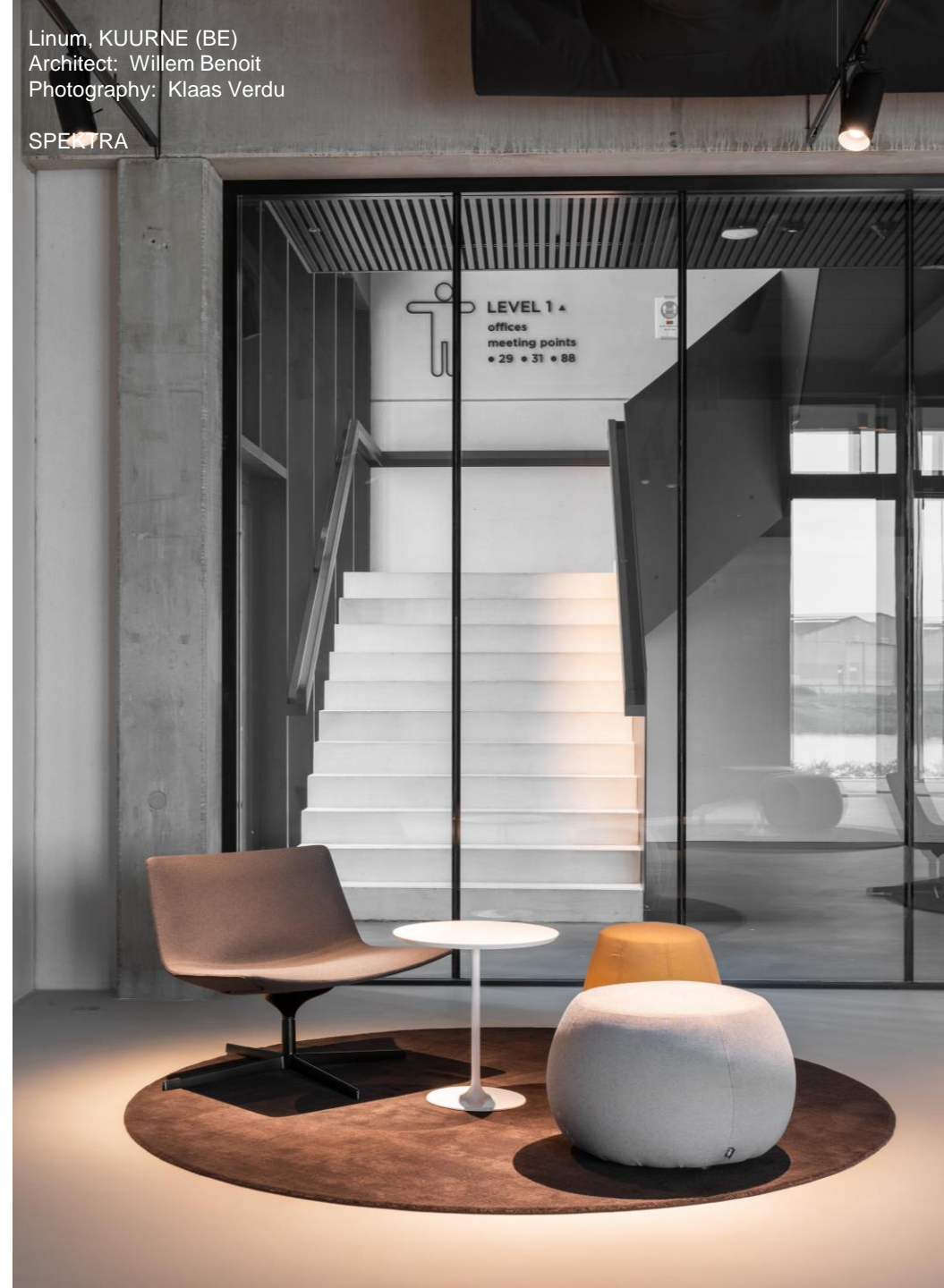


04

THE CONCEPT OFFICE

Trends are shifting towards spaces that are specified into zones,
Created around the changing needs of users.

Much like current trends in retail spaces,
workspaces are transforming and giving way to concept offices,
where the creation of an experience for employees and clients alike is key,
even centric to design.





Break out area



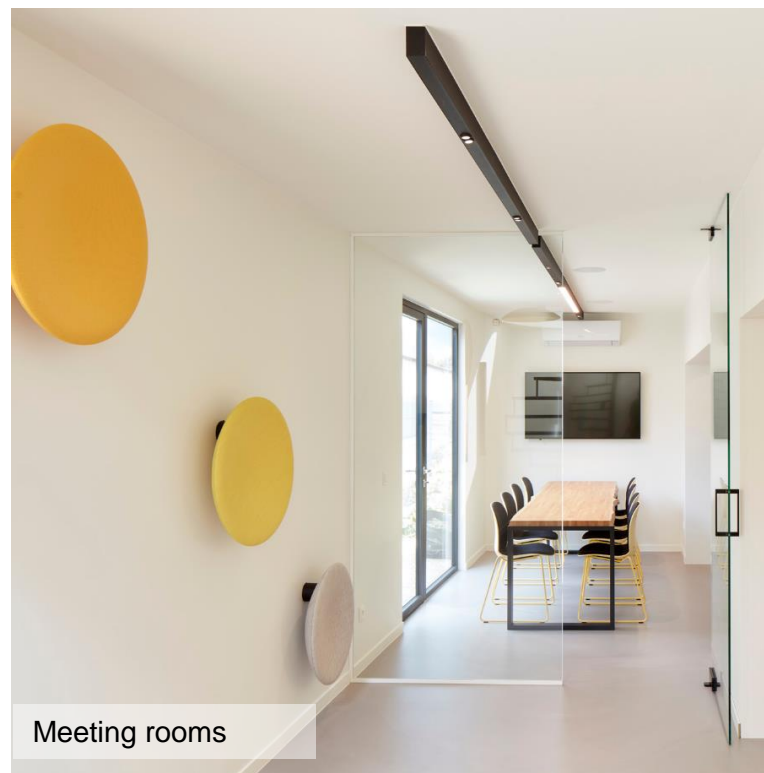
Welcome area



Projectroom



Meeting rooms



Meeting rooms

GBL Studio, KORTRIJK (BE)
Architect: Studijoh
Photography: Beeldcollectief

SLD50
DRUPL70
UNITED
FLAT MOON
PISTA



Break out area



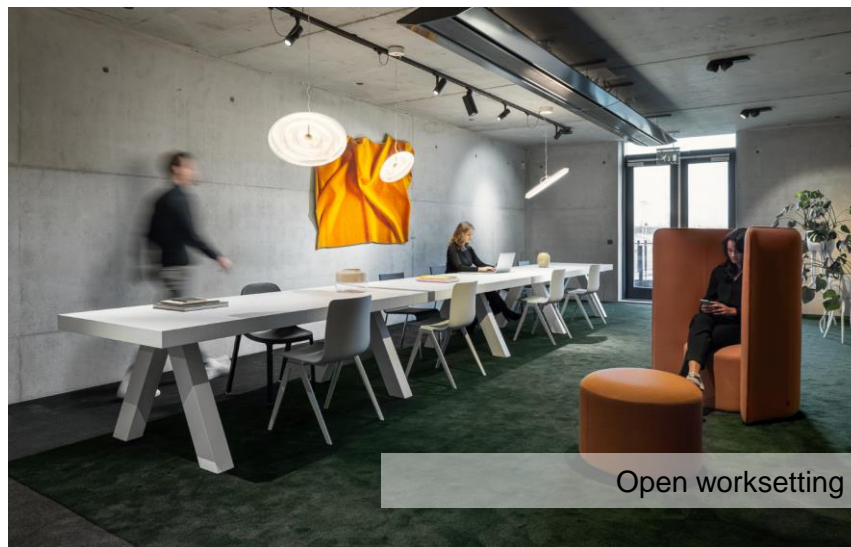
Individual hubs to talk in silence



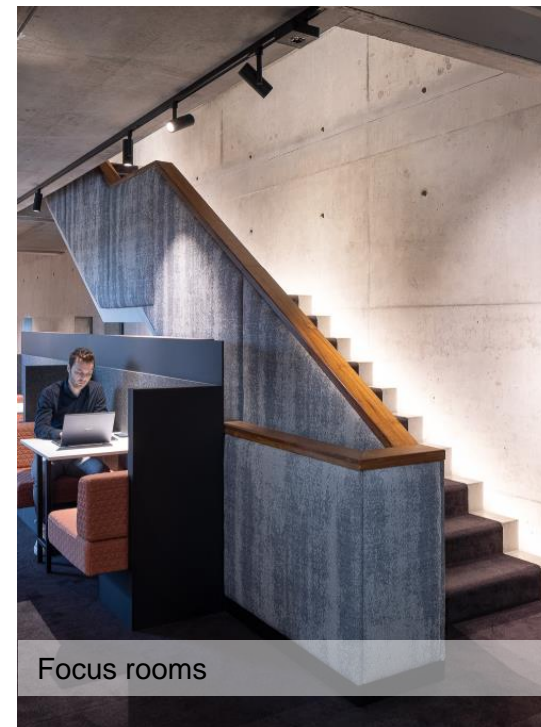
Informal meeting area

Creative Valley, UTRECHT (NL)
Architect: VOID interieurarchitectuur
Photography: Stijn Poelstra

KANON TRACK
MARBUL
MEDARD
NUDE WALL
SMART KUP
DUELL



Open worksetting



Focus rooms



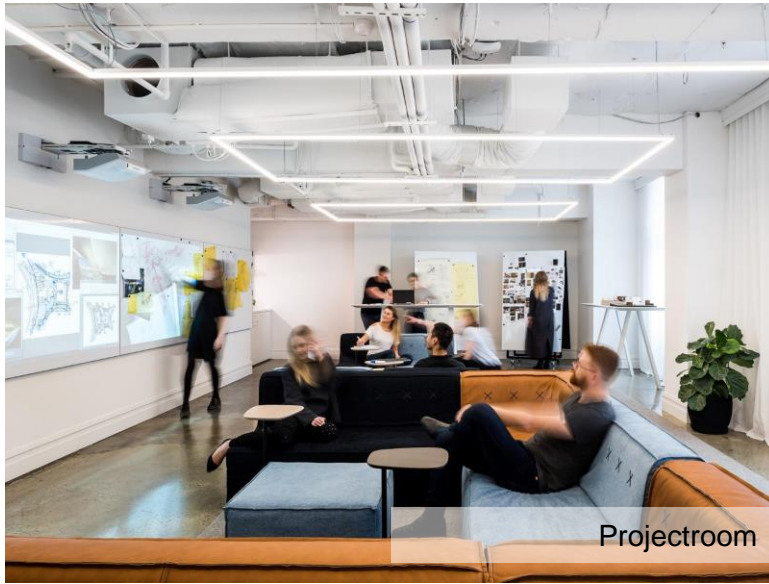
Meeting room



BreakOut Area



Cave of inspiration



Projectroom

Geyer Studio & Woods Bagot, PERTH (AU)
 Architect:
 Photography:

SLD25
 DRUPL70
 MEDARD



Projectroom



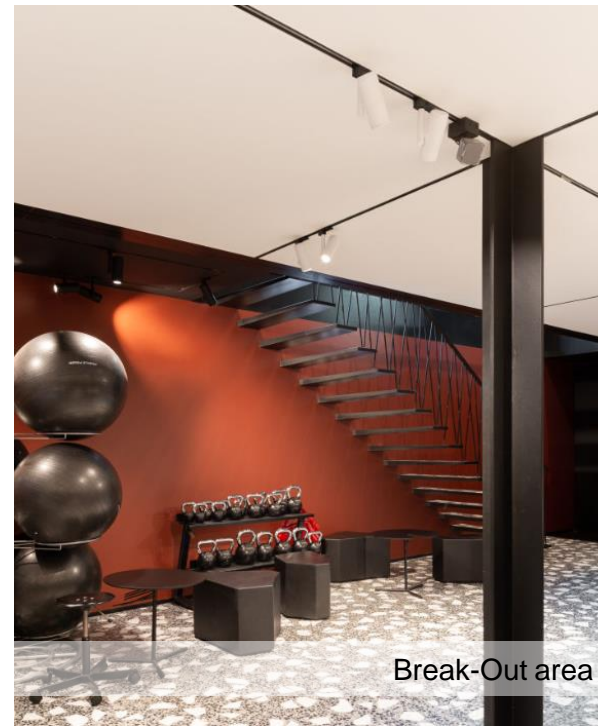
Cave of inspiration

Office Binst Architects, ANTWERP (BE)
Architect: Binst architects
Photography: Jim Van Loo

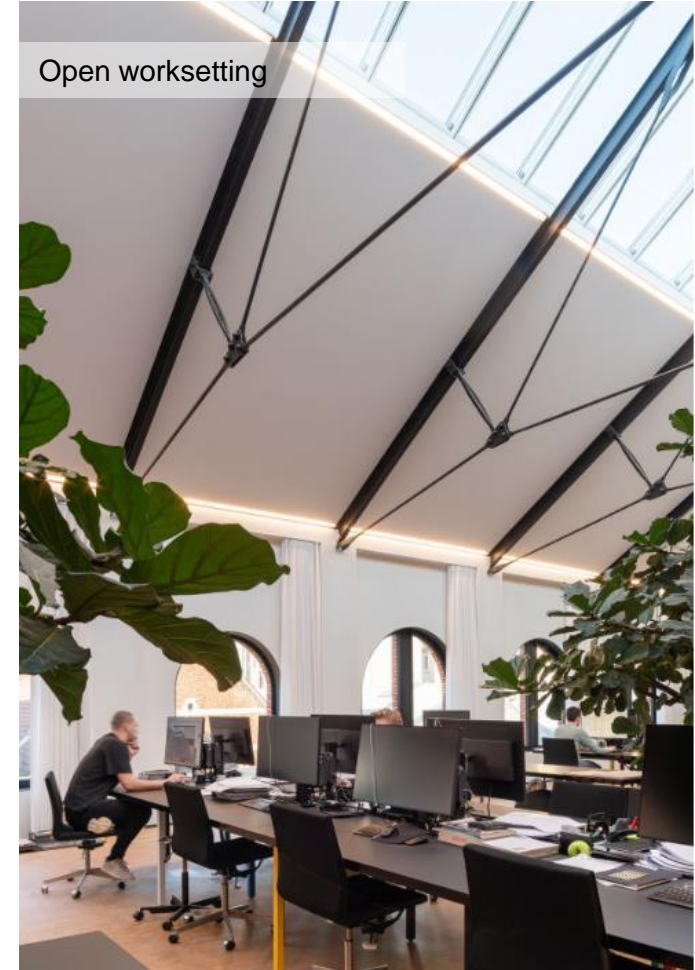
SLD50
DRUPL70
MEDARD



Meeting rooms



Break-Out area



Open worksetting

MODULAR LIGHTING INSTRUMENTS

the added design value for your office space

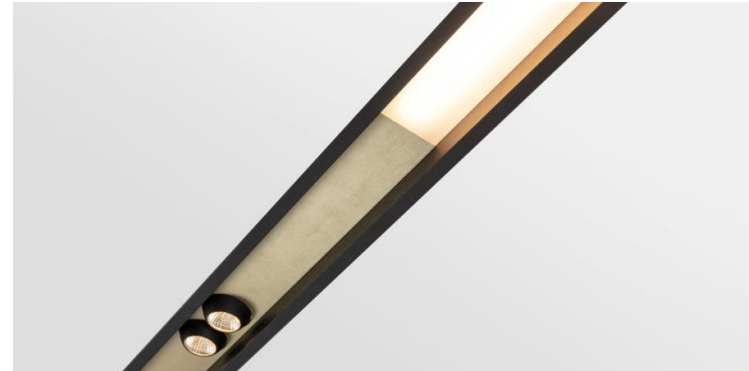
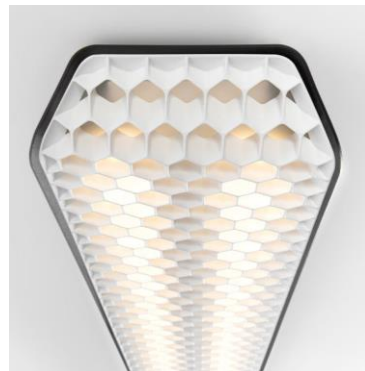
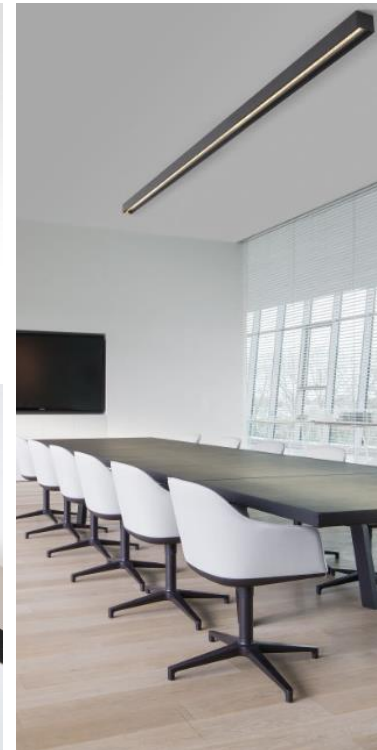
- Visual comfort meets architectural lighting
 - A total concept lighting experience
 - High-end anodized finishes
 - Modularity with Pista track 48V
 - sustainability



Visual comfort becomes architectural

We support architects in expressing their vision,
By not only answering the technical requirements of light,
But by enhancing architectural features and ambiances of a space.





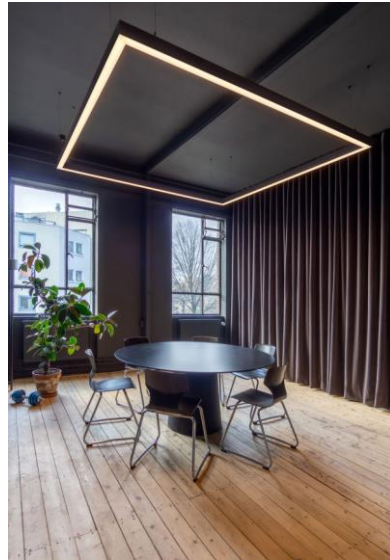


a total concept lighting experience

Thanks to many of our bespoke designs,
our brand is well recognized in several segments

Using our luminaires in the office supports the idea of creating a concept office,
of blending worlds and adjusting light to user needs,
and ultimately,
bringing a personal touch to the office..







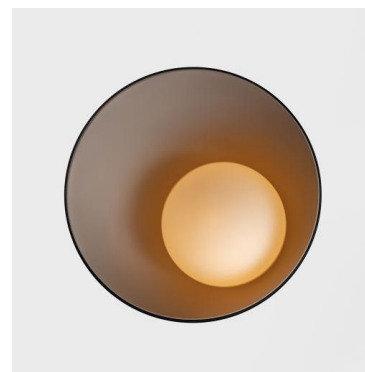
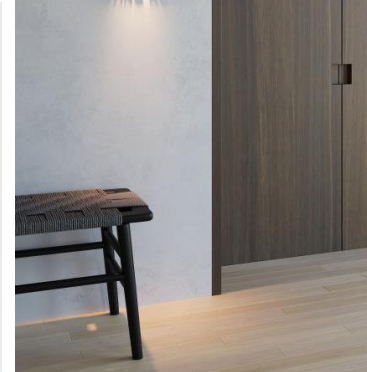
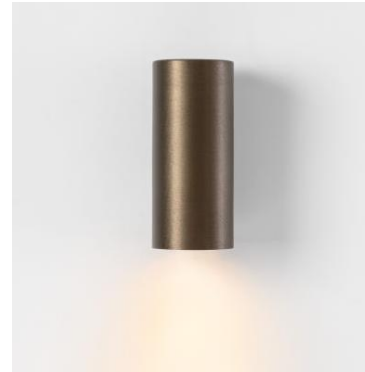
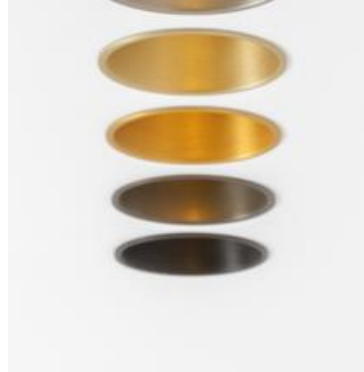
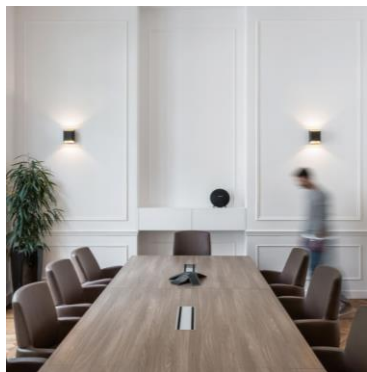
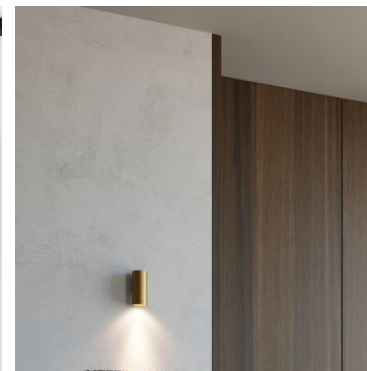
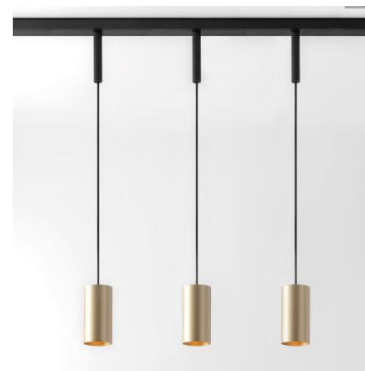
High-end anodised finishes

Add a rich and luxurious feel to your lighting plan with a high-end anodised finish available in a long list of colours.

Be tempted by the warmth of silver bronze, champagne and gold colours, or the eye-catching effects of black or silver-bronze on natural materials. Combine colour and material to suggest a little more tone to a minimalistic expression..

Available for:

SLD25
SLD35
SLD50
LOTIS
THIMBLE
MINUDE
NUDE
PLACEBO
EXTRUDED
DUELL
TRAPZ





Modularity with Pista track 48V

The new office needs a concept space which easily can be adapted and that is flexible enough to quickly adapt to the personal, dynamic requirements, and style of their users.





PISTA TRACK 48V

MODULARITY MEETS TECHNICAL CEILING

CLIMAT CONTROL BRACKET
to integrate pista track 48V
into your technical office ceiling





SUSTAINABILITY



Climate action

We are engaged in fighting climate change by digitizing and changing our way of doing business, and adapting our production methods to incorporate more sustainable solutions.

Circularity

Modularity also means we look for durability in our choice of materials.

We leave minimal waste behind during the manufacturing process, and aim to turn the end of a product's life into something new.

Health and well-being

We always highlight the importance of quality lighting in our lives, how it affects our mood, our health and productivity.

We promote the inclusion of human centric lighting solutions in our lighting designs.

A great place to work

Work life can be fun and that's how we do it at Modular Lighting Instruments.

Our company culture welcomes and fosters light lovers of every kind.

Everyone has a say, a place, and the opportunity to work within a flexible working environment, in respect to the individual.

